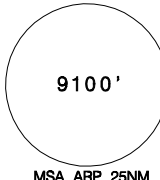
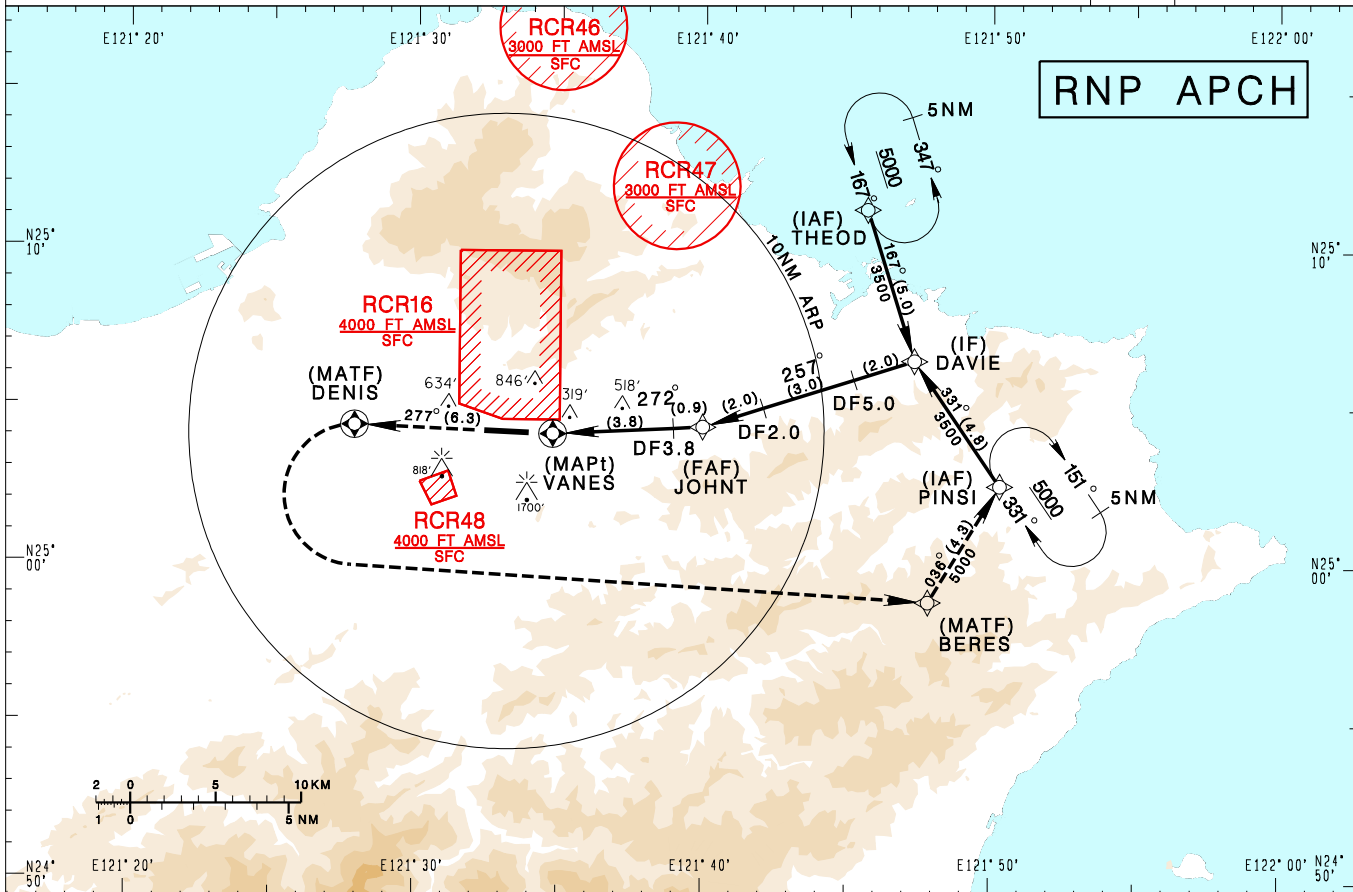


**臺北/松山機場**  
TAIPEI/SONGSHAN AD

RCSS  
RNP RWY28

TAIPEI APP 119.7 119.6 125.1			SONGSHAN TWR 118.1			ATIS 127.4 341			VAR 5°W-2022	
Apt Elev: 18'		Rwy28 THR Elev: 14'		Trans Level: FL130		Trans Alt: 11,000'				
BEARINGS ARE MAGNETIC; DISTANCES ARE NAUTICAL MILES; ELEVATIONS, HEIGHTS IN FEET										

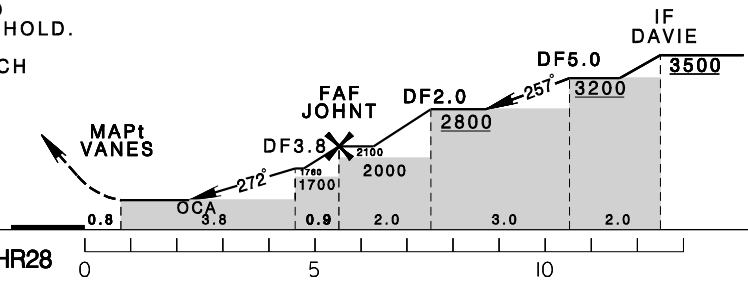


DIST to THR28	2.0NM	3.0NM	4.0NM	5.0NM	5.5NM
ADVISORY ALT	800	1170	1540	1910	2100

CHANGES: RCR49 COMPLETELY WITHDRAWN; MAG VAR AND TRACK.

MISSED APCH:  
CLIMB DIRECT TO DENIS,  
CROSS DENIS AT 3000,  
THEN CLIMB LEFT TURN DIRECT TO  
BERES, PINSI, CLIMB TO 5000 AND HOLD.

\*REQUIRES A MINIMUM MISSED APCH  
CLIMB GRADIENT OF 5%(305ft/NM)  
DUE RCR48, IF UNABLE  
ADVISE ATC FOR RADAR VECTOR.



MINIMA (OCA IN FT, VIS IN M, OCH IN FT)

CATEGORY	A	B	C	D
LNAV	790/3600 772			

- NOTE
1. CIRCLING NOT AUTHORIZED.
  2. DESCENT ANGLE FROM FAF IS 3.49°, NOT COINCIDENT WITH PAPI.
  3. FINAL APCH COURSE INTERCEPTS RWY CL EXTENSION AT 0.8NM FROM THRESHOLD WITH 5° OFFSET.
  4. A 1700ft-HIGH BLDG AT 2.1NM SOUTH OF THR28.
  5. A 818ft-HIGH BLDG AT 2NM SW OF THR10.
  6. ALL INITIAL APCH TRNS ARE LIMITED TO 210KT IAS.
  7. DME/DME RNAV NOT AUTHORIZED.
  8. DF MAY NOT BE CODED INTO ALL MODELS OF FMS. PILOT SHALL CHECK MANUALLY AND INDEPENDENTLY THE ASSOCIATED ALT AND DIST INFO WITH THE DF CONCERNED.
  9. CAUTION OBSTACLES UP TO 304FT PENETRATE THE VISUAL SEGMENT SURFACE (VSS).